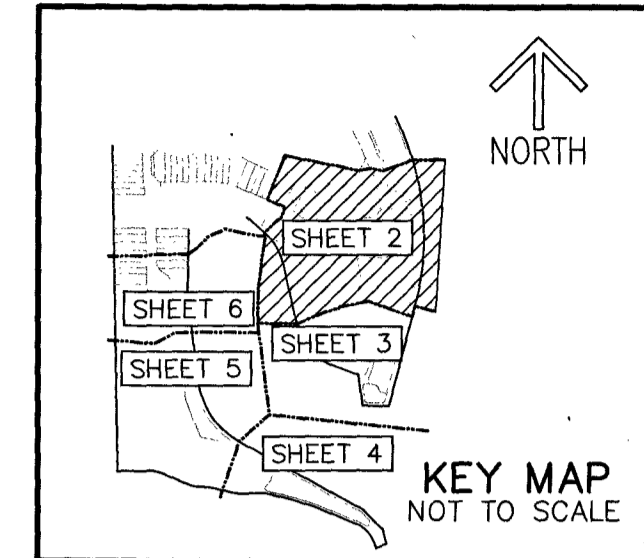


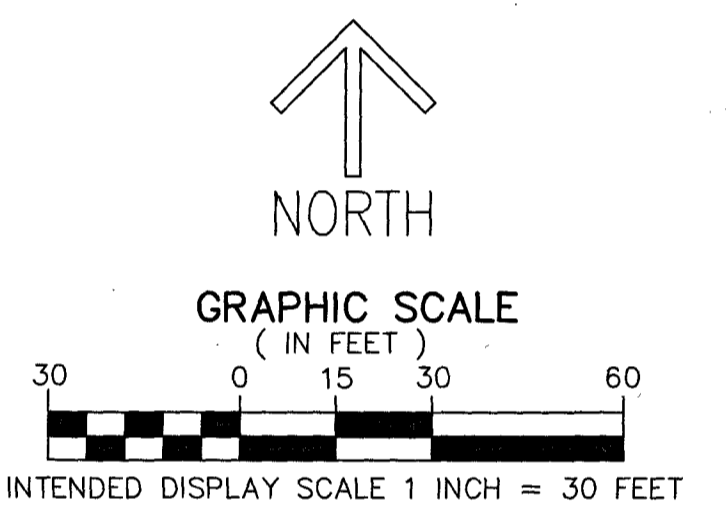
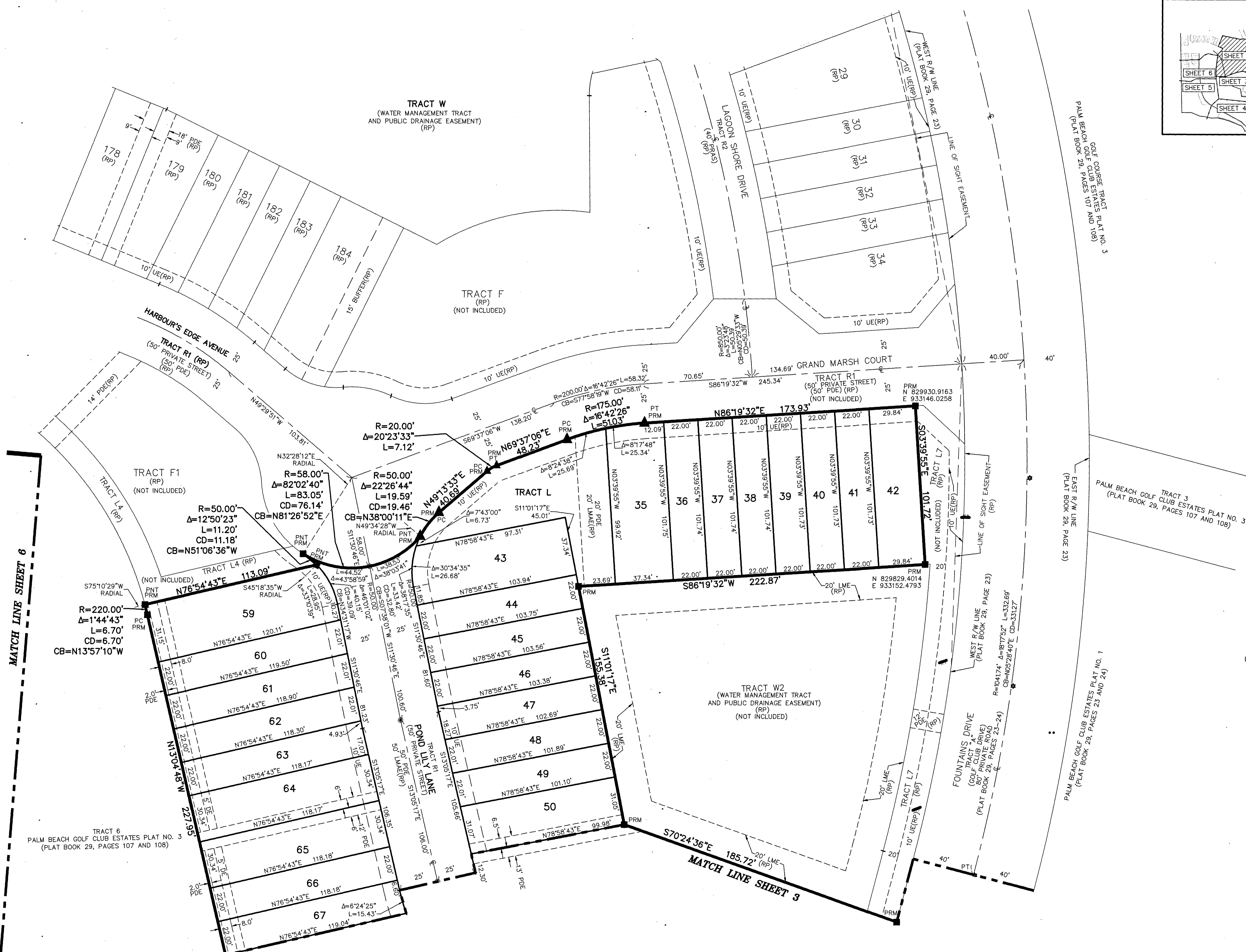
LAKESHORE AT THE FOUNTAINS REPLAT

BEING A REPLAT OF PARCELS A AND B, LAKESHORE AT THE FOUNTAINS,
AS RECORDED IN PLAT BOOK 135, PAGES 20 THROUGH 28 OF THE PUBLIC RECORDS OF PALM BEACH COUNTY, FLORIDA,
LYING IN SECTIONS 27 AND 28, TOWNSHIP 44 SOUTH, RANGE 42 EAST, PALM BEACH COUNTY, FLORIDA

92



SHEET 2 OF 6



NOTES
COORDINATES, BEARINGS AND DISTANCES
COORDINATES SHOWN ARE GRID
DATUM = NAD 83 (90 ADJUSTMENT)
ZONE = FLORIDA EAST
LINEAR UNIT = US SURVEY FEET
COORDINATE SYSTEM 1983 STATE PLANE
TRANSVERSE MERCATOR PROJECTION
SCALE FACTOR = 1.0000295
GROUND DISTANCE X SCALE FACTOR = GRID DISTANCE
BEARINGS AS SHOWN HEREON ARE GRID DATUM
NAD 83 (90 ADJUSTMENT), FLORIDA EAST ZONE.

- LEGEND/ABBREVIATIONS**
- ⊙ - CENTERLINE
 - Δ - DELTA (CENTRAL ANGLE)
 - CB - CHORD BEARING
 - CD - CHORD DISTANCE
 - E - EASTING (WHEN USED WITH COORDINATES)
 - FND - FOUND
 - L - ARC LENGTH
 - LB - LICENSED BUSINESS
 - LMAE - LAKE MAINTENANCE ACCESS EASEMENT
 - L.W.D. - LAKE WORTH DRAINAGE DISTRICT
 - N - NORTHING (WHEN USED WITH COORDINATES)
 - O.R.B. - OFFICIAL RECORD BOOK
 - PB/CUE - PALM BEACH COUNTY UTILITY EASEMENT
 - PC - POINT OF CURVATURE
 - PDE - PUBLIC DRAINAGE EASEMENT
 - PT - POINT OF TANGENCY
 - PNT - POINT OF NON-TANGENCY
 - (PRAS) - PRIVATE RESIDENTIAL ACCESS STREET
 - (P) - PALM BEACH GOLF CLUB ESTATES PLAT NO. 3
PLAT BOOK 29, PAGES 107-108
 - R - RADIUS
 - (RP) - LAKESHORE AT THE FOUNTAINS
PLAT BOOK 135, PAGES 20 THROUGH 28
 - (R) - RADIAL LINE
 - (R) - ROAD PLAT BOOK 1, PAGES 129-135
 - (R) - ROAD PLAT BOOK 5, PAGES 125-138
 - R/W - RIGHT-OF-WAY
 - ⊙PCP - DENOTES PERMANENT CONTROL POINT
NAIL AND METAL DISK STAMPED "PCP LB3591"
 - PRM - DENOTES PERMANENT REFERENCE MONUMENT
SET 4" X 4" X 24" CONCRETE MONUMENT WITH
ALUMINUM DISK STAMPED "C&W PRM LB3591"
 - ▲ - DENOTES HORIZONTAL CONTROL POINT
 - ▲ - DENOTES FOUND PERMANENT REFERENCE MONUMENT
NAIL AND DISC STAMPED "PRM" LB 3591

THIS INSTRUMENT PREPARED BY
DAVID P. LINDLEY
OF
CAULFIELD & WHEELER, INC.
SURVEYORS - ENGINEERS - PLANNERS
7900 GLADES ROAD, SUITE 100
BOCA RATON, FLORIDA 33434 - (561)392-1991
CERTIFICATE OF AUTHORIZATION NO. LB3591